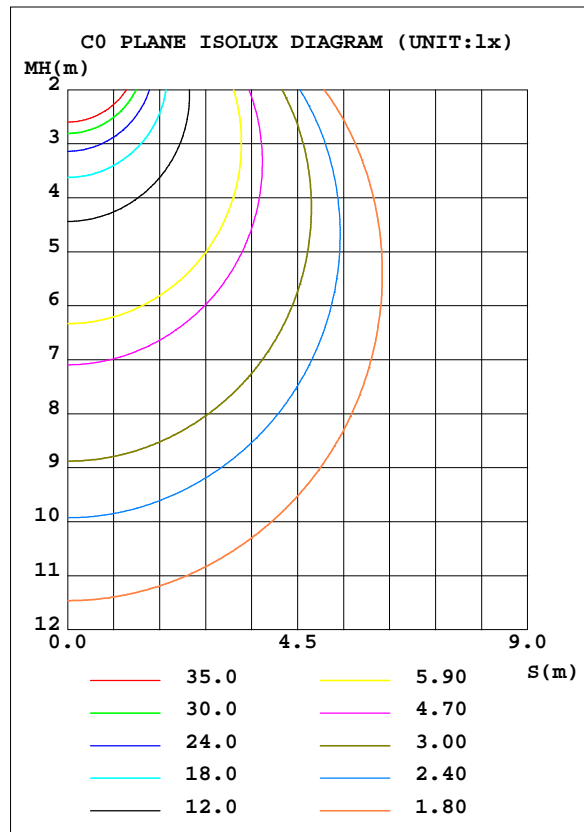
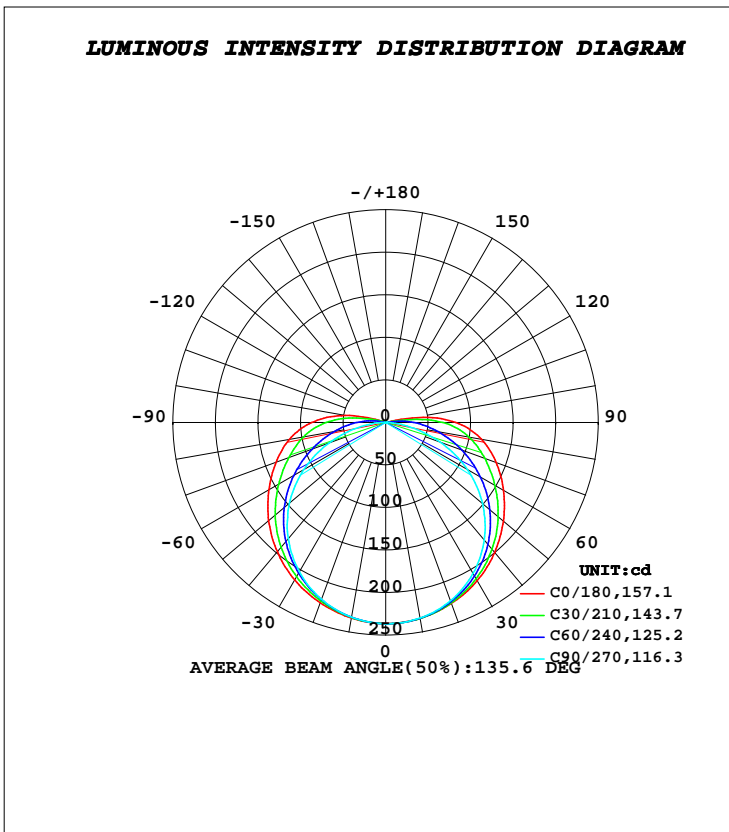


**LUMINAIRE PHOTOMETRIC TEST REPORT**

Test:U:12.000V I:0.7510A P:9.0000W PF:1.0000 Freq:0Hz		
Lamp Flux:920.285x1 lm		
Name: COB LED STRIP 9W 3000K IP20	Type: LED	
MFR.:		

DATA OF LAMP		PHOTOMETRIC DATA Eff: 102.25 lm/W			
MODEL		I <sub>max</sub> (cd)	236.8	S/MH(C0/180)	1.35
NOMINAL POWER(W)	9	LOR(%)	100.0	S/MH(C90/270)	1.28
RATED VOLTAGE(V)	12	TOTAL FLUX(lm)	920.28	η UP, DN(C0-180)	2.4, 47.5
NOMINAL FLUX(lm)	920.285	CIE CLASS	DIRECT	η UP, DN(C180-360)	2.8, 47.3
LAMPS INSIDE	1	η up(%)	5.2	CIBSE SHR NOM	1.50
TEST VOLTAGE(V)	12	η down(%)	94.8	CIBSE SHR MAX	1.55



**C Range: 0 - 360DEG**  
**C Interval: 30.0DEG**  
**Test Speed: HIGH**  
**Temperature:25.3DEG**  
**Operators:DAMIN**  
**Test Date:2023-11-03**

**γ Range: 0 - 180DEG**  
**γ Interval: 1.0DEG**  
**Test System:EVERFINE GO-2000A\_V1 SYSTEM V2.00.443**  
**Humidity:65.0%**  
**Test Distance:8.000m [K=0.7125]**  
**Remarks:**

**ZONAL FLUX DIAGRAM**

**ZONAL FLUX DIAGRAM:**

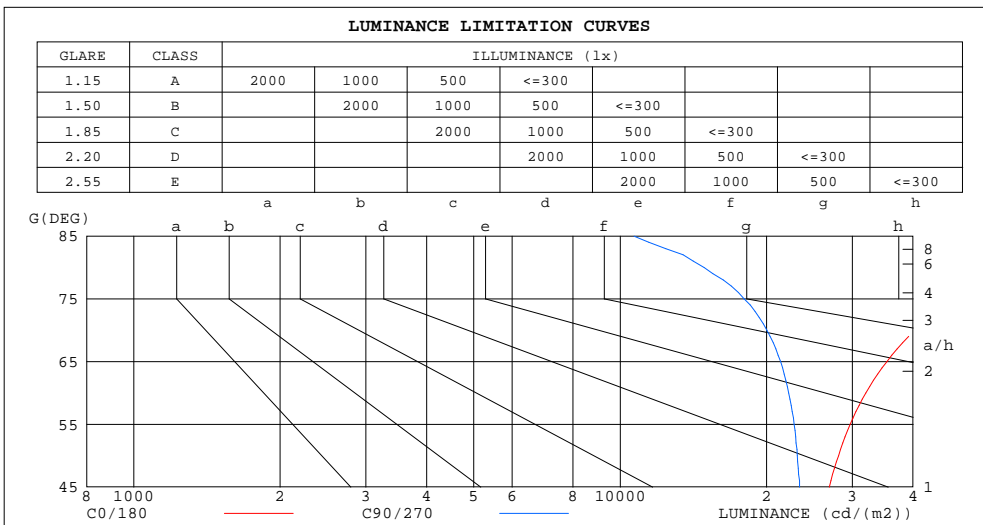
$\gamma$	C0	C45	C90	C135	C180	C225	C270	C315	$\gamma$	$\Phi$ zone	$\Phi$ total	%lum,lamp
10	233.7	233.9	233.4	233.7	233.4	232.5	232.4	233.4	0- 10	22.43	22.43	2.44,2.44
20	226.3	225.0	223.0	224.2	225.4	222.4	221.1	224.0	10- 20	64.80	87.23	9.48,9.48
30	214.9	210.6	205.2	209.6	213.9	207.1	202.9	209.4	20- 30	100.2	187.4	20.4,20.4
40	199.5	190.8	180.4	189.8	198.2	186.9	178.2	189.7	30- 40	125.2	312.6	34,34
50	180.6	166.3	148.8	165.5	179.7	162.7	148.0	165.8	40- 50	137.1	449.7	48.9,48.9
60	160.0	138.4	111.1	137.9	158.5	135.1	111.3	138.8	50- 60	135.2	584.9	63.6,63.6
70	138.3	109.8	68.53	109.6	137.2	106.8	70.73	111.1	60- 70	121.0	705.9	76.7,76.7
80	114.2	81.03	25.84	81.97	114.9	79.64	29.90	83.24	70- 80	97.97	803.9	87.4,87.4
90	82.68	50.37	0.8488	53.36	87.05	52.09	2.574	44.08	80- 90	68.58	872.5	94.8,94.8
100	31.94	5.634	0.5717	18.24	48.10	19.69	1.187	11.96	90-100	36.89	909.4	98.8,98.8
110	0.9753	0.7457	0.5465	1.603	6.052	2.228	1.127	1.535	100-110	6.578	915.9	99.5,99.5
120	0.7979	0.6835	0.5598	0.7797	1.418	1.261	1.124	1.366	110-120	1.231	917.2	99.7,99.7
130	0.7477	0.6644	0.6032	0.7540	1.245	1.170	1.127	1.241	120-130	0.8704	918.0	99.8,99.8
140	0.8044	0.7299	0.6758	0.8211	1.203	1.173	1.138	1.228	130-140	0.7431	918.8	99.8,99.8
150	0.8653	0.8024	0.7642	0.9042	1.211	1.187	1.143	1.209	140-150	0.6259	919.4	99.9,99.9
160	0.9329	0.8840	0.8595	0.9986	1.194	1.173	1.136	1.194	150-160	0.4789	919.9	100,100
170	1.017	0.9772	0.9603	1.070	1.161	1.131	1.102	1.173	160-170	0.3017	920.2	100,100
180	1.083	1.043	1.033	1.107	1.086	1.044	1.026	1.110	170-180	0.1028	920.3	100,100
DEG	LUMINOUS INTENSITY:cd									UNIT:lm		

**C Range: 0 - 360DEG**  
**C Interval: 30.0DEG**  
**Test Speed: HIGH**  
**Temperature:25.3DEG**  
**Operators:DAMIN**  
**Test Date:2023-11-03**

**$\gamma$  Range: 0 - 180DEG**  
 **$\gamma$  Interval: 1.0DEG**  
**Test System:EVERFINE GO-2000A\_V1 SYSTEM V2.00.443**  
**Humidity:65.0%**  
**Test Distance:8.000m [K=0.7125]**  
**Remarks:**

**LUMINANCE LIMITATION CURVES**

Test:U:12.000V I:0.7510A P:9.0000W PF:1.0000 Freq:0Hz		
Lamp Flux:920.285x1 lm		
Name: COB LED STRIP 9W 3000K IP20	Type: LED	
MFR.:		



LUMINANCE cd/(m2)		
G(DEG)	C0/180	C90/270
85	114488	10682
80	65788	14883
75	48993	17992
70	40437	20038
65	35334	21367
60	31995	22217
55	29715	22786
50	28104	23145
45	26916	23383

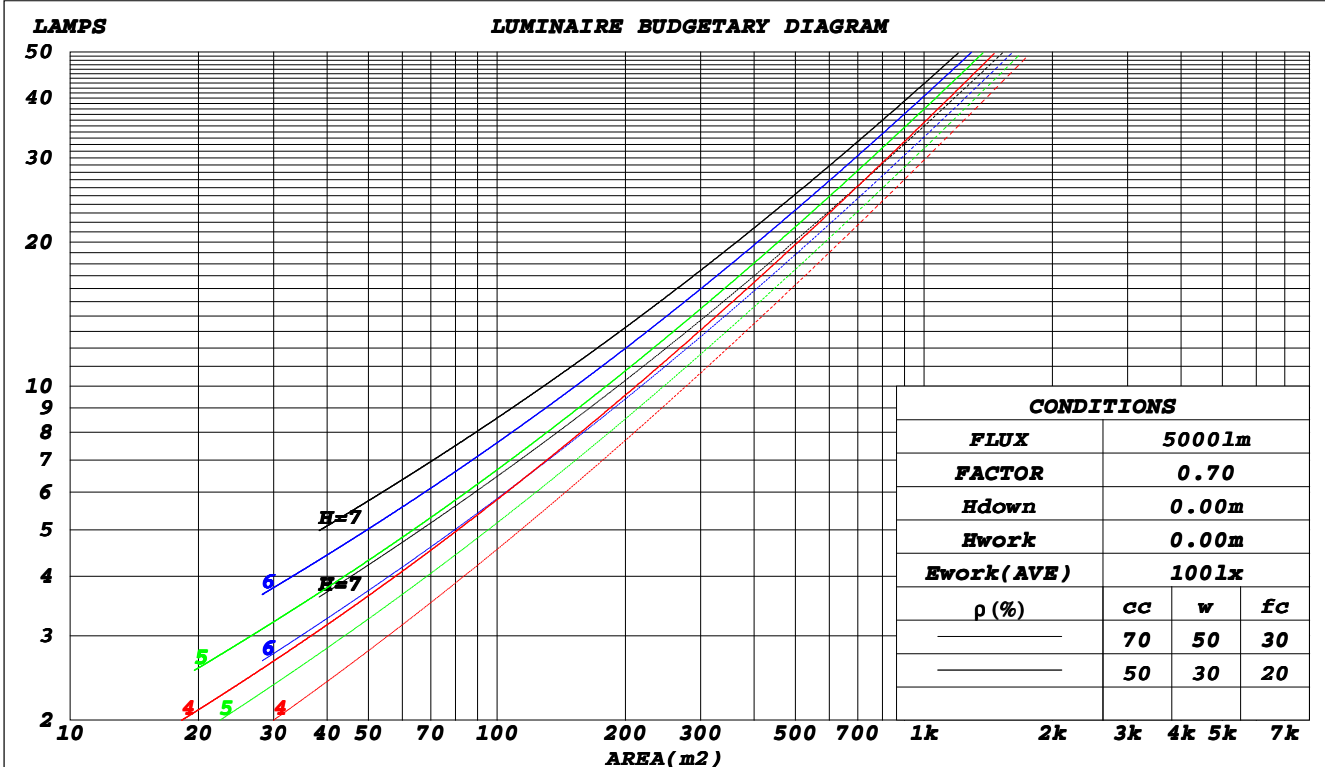
**C Range: 0 - 360DEG**  
**C Interval: 30.0DEG**  
**Test Speed: HIGH**  
**Temperature: 25.3DEG**  
**Operators: DAMIN**  
**Test Date: 2023-11-03**

**γ Range: 0 - 180DEG**  
**γ Interval: 1.0DEG**  
**Test System: EVERFINE GO-2000A\_V1 SYSTEM V2.00.443**  
**Humidity: 65.0%**  
**Test Distance: 8.000m [K=0.7125]**  
**Remarks:**

**CU AND LUMINAIRE BUDGETARY ESTIMATE DIAGRAM**

Test:U:12.000V I:0.7510A P:9.0000W PF:1.0000 Freq:0Hz		
Lamp Flux:920.285x1 lm		
Name: COB LED STRIP 9W 3000K IP20	Type: LED	
MFR.:		

$\rho_{cc}$	80%			70%			50%			30%			10%			0
$\rho_w$	50%	30%	10%	50%	30%	10%	50%	30%	10%	50%	30%	10%	50%	30%	10%	0
$\rho_{fc}$	20%			20%			20%			20%			20%			0
RCR	RCR:Room Cavity Ratio						Coefficients of Utilization(CU)									
0.0	1.18	1.18	1.18	1.14	1.14	1.14	1.08	1.08	1.08	1.03	1.03	1.03	.97	.97	.97	.95
1.0	.98	.93	.88	.96	.91	.86	.90	.86	.82	.85	.82	.79	.81	.78	.76	.73
2.0	.84	.76	.69	.82	.74	.68	.77	.71	.66	.73	.68	.63	.69	.65	.61	.58
3.0	.73	.64	.56	.71	.62	.55	.67	.60	.54	.63	.57	.52	.60	.55	.50	.48
4.0	.64	.54	.47	.62	.53	.46	.59	.51	.45	.56	.49	.44	.53	.47	.43	.40
5.0	.57	.47	.40	.55	.46	.39	.53	.45	.38	.50	.43	.37	.47	.41	.37	.34
6.0	.51	.41	.34	.50	.41	.34	.47	.39	.33	.45	.38	.33	.43	.37	.32	.30
7.0	.46	.37	.30	.45	.36	.30	.43	.35	.29	.41	.34	.29	.39	.33	.28	.26
8.0	.42	.33	.27	.41	.32	.26	.39	.31	.26	.37	.30	.25	.36	.30	.25	.23
9.0	.38	.30	.24	.37	.29	.24	.36	.28	.23	.34	.28	.23	.33	.27	.22	.20
10.0	.35	.27	.22	.34	.27	.21	.33	.26	.21	.32	.25	.21	.31	.25	.20	.18



C Range: 0 - 360DEG  
 C Interval: 30.0DEG  
 Test Speed: HIGH  
 Temperature: 25.3DEG  
 Operators: DAMIN  
 Test Date: 2023-11-03

$\gamma$  Range: 0 - 180DEG  
 $\gamma$  Interval: 1.0DEG  
 Test System: EVERFINE GO-2000A\_V1 SYSTEM V2.00.443  
 Humidity: 65.0%  
 Test Distance: 8.000m [K=0.7125]  
 Remarks:

**WEC AND CCEC**

Test:U:12.000V I:0.7510A P:9.0000W PF:1.0000 Freq:0Hz		
Lamp Flux:920.285x1 lm		
Name: COB LED STRIP 9W 3000K IP20	Type: LED	
MFR.:		

$\rho_{cc}$	80%			70%			50%			30%			10%			0
$\rho_w$	50%	30%	10%	50%	30%	10%	50%	30%	10%	50%	30%	10%	50%	30%	10%	0
$\rho_{fc}$	20%			20%			20%			20%			20%			0
<b>RCR</b>	<b>RCR:Room Cavity Ratio</b>						<b>Wall Exitance Coefficients(WEC)</b>									
0.0																
1.0	.391	.223	.071	.382	.218	.069	.366	.210	.067	.351	.202	.065	.337	.195	.063	
2.0	.341	.187	.057	.333	.183	.057	.318	.177	.055	.304	.171	.053	.292	.165	.052	
3.0	.304	.162	.048	.296	.159	.048	.283	.153	.047	.271	.148	.046	.259	.144	.044	
4.0	.273	.142	.042	.267	.140	.041	.255	.135	.040	.244	.131	.040	.234	.127	.039	
5.0	.248	.127	.037	.243	.125	.036	.232	.121	.036	.222	.117	.035	.213	.114	.034	
6.0	.228	.114	.033	.222	.112	.032	.213	.109	.032	.204	.106	.031	.196	.103	.031	
7.0	.210	.104	.029	.205	.102	.029	.197	.099	.029	.188	.097	.028	.181	.094	.028	
8.0	.194	.095	.027	.190	.094	.026	.183	.091	.026	.175	.089	.026	.168	.086	.025	
9.0	.181	.088	.024	.177	.086	.024	.170	.084	.024	.164	.082	.023	.157	.080	.023	
10.0	.169	.081	.023	.166	.080	.022	.160	.078	.022	.154	.076	.022	.148	.074	.021	

$\rho_{cc}$	80%			70%			50%			30%			10%			0
$\rho_w$	50%	30%	10%	50%	30%	10%	50%	30%	10%	50%	30%	10%	50%	30%	10%	0
$\rho_{fc}$	20%			20%			20%			20%			20%			0
<b>RCR</b>	<b>RCR:Room Cavity Ratio</b>						<b>Ceiling Cavity Exitance Coefficients(CCEC)</b>									
0.0	.230	.230	.230	.197	.197	.197	.134	.134	.134	.077	.077	.077	.025	.025	.025	
1.0	.226	.195	.168	.193	.168	.144	.132	.115	.100	.076	.067	.058	.024	.021	.019	
2.0	.219	.172	.132	.188	.148	.114	.129	.102	.080	.074	.060	.047	.024	.019	.015	
3.0	.211	.155	.110	.181	.134	.095	.124	.093	.067	.072	.054	.039	.023	.018	.013	
4.0	.203	.142	.095	.175	.123	.083	.120	.086	.058	.069	.050	.034	.022	.016	.011	
5.0	.195	.132	.085	.168	.114	.074	.116	.080	.052	.067	.047	.031	.022	.015	.010	
6.0	.188	.124	.078	.161	.107	.068	.111	.075	.048	.065	.044	.029	.021	.014	.009	
7.0	.180	.117	.073	.155	.101	.063	.107	.071	.045	.062	.042	.027	.020	.014	.009	
8.0	.174	.111	.069	.149	.097	.060	.103	.068	.042	.060	.040	.025	.019	.013	.008	
9.0	.167	.106	.065	.144	.092	.057	.100	.065	.041	.058	.038	.024	.019	.013	.008	
10.0	.161	.102	.063	.139	.089	.055	.096	.062	.039	.056	.037	.023	.018	.012	.008	

**C Range: 0 - 360DEG**  
**C Interval: 30.0DEG**  
**Test Speed: HIGH**  
**Temperature:25.3DEG**  
**Operators:DAMIN**  
**Test Date:2023-11-03**

**$\gamma$  Range: 0 - 180DEG**  
 **$\gamma$  Interval: 1.0DEG**  
**Test System:EVERFINE GO-2000A\_V1 SYSTEM V2.00.443**  
**Humidity:65.0%**  
**Test Distance:8.000m [K=0.7125]**  
**Remarks:**

**UGR(Unified Glare Rating) Table**

Test:U:12.000V I:0.7510A P:9.0000W PF:1.0000 Freq:0Hz		
Lamp Flux:920.285x1 lm		
Name: COB LED STRIP 9W 3000K IP20	Type: LED	
MFR.:		

ceiling/cavity	0.7	0.7	0.5	0.5	0.3	0.7	0.7	0.5	0.5	0.3
walls	0.5	0.3	0.5	0.3	0.3	0.5	0.3	0.5	0.3	0.3
working plane	0.2	0.2	0.2	0.2	0.2	0.2	0.2	0.2	0.2	0.2
Room dimensions	Viewed crosswise					Viewed endwise				
<b>x = 2H y = 2H</b>	<b>24.6</b>	<b>26.2</b>	<b>24.9</b>	<b>26.5</b>	<b>26.8</b>	<b>23.3</b>	<b>24.8</b>	<b>23.6</b>	<b>25.1</b>	<b>25.5</b>
3H	27.2	28.6	27.6	29.0	29.3	24.9	26.3	25.3	26.7	27.0
4H	28.6	30.0	29.0	30.4	30.7	25.5	26.9	25.9	27.3	27.6
6H	30.2	31.5	30.6	31.9	32.3	25.9	27.3	26.4	27.6	28.0
8H	31.0	32.3	31.5	32.7	33.1	26.1	27.3	26.5	27.7	28.1
12H	32.0	33.2	32.4	33.6	34.0	26.1	27.4	26.6	27.8	28.2
<b>4H 2H</b>	<b>25.2</b>	<b>26.6</b>	<b>25.6</b>	<b>27.0</b>	<b>27.4</b>	<b>24.3</b>	<b>25.6</b>	<b>24.7</b>	<b>26.0</b>	<b>26.4</b>
3H	28.1	29.3	28.5	29.7	30.1	26.1	27.4	26.6	27.8	28.2
4H	29.7	30.8	30.1	31.2	31.7	27.0	28.1	27.4	28.5	29.0
6H	31.5	32.5	31.9	32.9	33.4	27.6	28.6	28.1	29.1	29.6
8H	32.4	33.4	32.9	33.9	34.4	27.8	28.8	28.3	29.3	29.8
12H	33.5	34.4	34.0	34.9	35.4	28.0	28.9	28.5	29.3	29.9
<b>8H 4H</b>	<b>30.1</b>	<b>31.0</b>	<b>30.6</b>	<b>31.5</b>	<b>32.0</b>	<b>27.9</b>	<b>28.8</b>	<b>28.4</b>	<b>29.3</b>	<b>29.8</b>
6H	32.1	33.0	32.7	33.5	34.0	28.9	29.7	29.4	30.2	30.7
8H	33.3	34.1	33.9	34.6	35.1	29.3	30.0	29.8	30.5	31.1
12H	34.7	35.3	35.2	35.8	36.4	29.6	30.2	30.2	30.8	31.4
<b>12H 4H</b>	<b>30.1</b>	<b>31.0</b>	<b>30.6</b>	<b>31.5</b>	<b>32.0</b>	<b>28.2</b>	<b>29.0</b>	<b>28.7</b>	<b>29.5</b>	<b>30.1</b>
6H	32.3	33.0	32.8	33.5	34.1	29.3	30.1	29.9	30.6	31.2
8H	33.6	34.2	34.1	34.7	35.3	29.9	30.6	30.5	31.1	31.7
<b>Variations with the observer position at spacings(CIE Pub.117):</b>										
<b>S = 1.0H</b>	<b>+ 0.1 / - 0.1</b>					<b>+ 0.1 / - 0.1</b>				
<b>1.5H</b>	<b>+ 0.2 / - 0.2</b>					<b>+ 0.2 / - 0.3</b>				
<b>2.0H</b>	<b>+ 0.2 / - 0.3</b>					<b>+ 0.2 / - 0.4</b>				

CIE Pub.117, 920.3 lm Total Lamp Luminous Flux Corrected (8log(F/F0) = -0.3)  
 Area: 0.01 m2

**C Range: 0 - 360DEG**  
**C Interval: 30.0DEG**  
**Test Speed: HIGH**  
**Temperature:25.3DEG**  
**Operators:DAMIN**  
**Test Date:2023-11-03**

**γ Range: 0 - 180DEG**  
**γ Interval: 1.0DEG**  
**Test System:EVERFINE GO-2000A\_V1 SYSTEM V2.00.443**  
**Humidity:65.0%**  
**Test Distance:8.000m [K=0.7125]**  
**Remarks:**

**UTILIZATION FACTORS TABLE**

Test:U:12.000V I:0.7510A P:9.0000W PF:1.0000 Freq:0Hz		
Lamp Flux:920.285x1 lm		
Name: COB LED STRIP 9W 3000K IP20	Type: LED	
MFR.:		

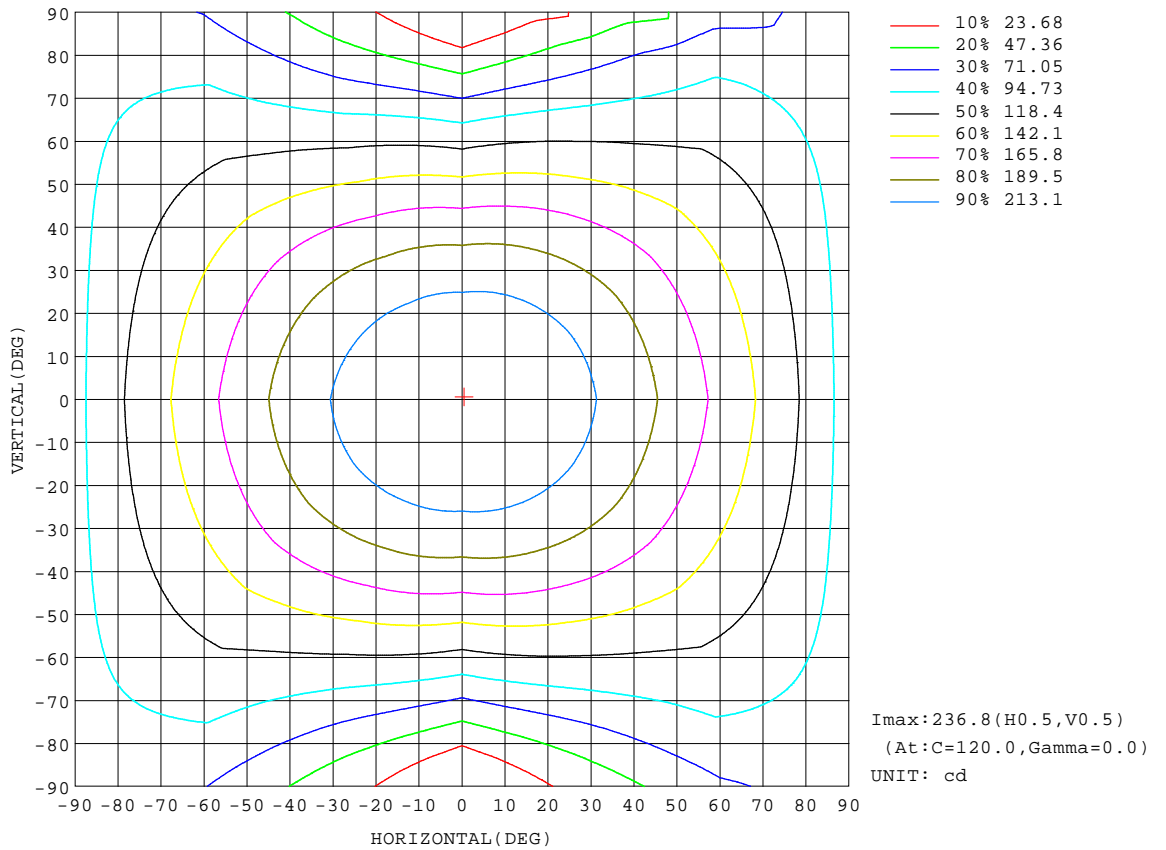
REFLECTANCE										
Ceiling	0.8	0.8	0.8	0.7	0.7	0.7	0.5	0.5	0.5	0
Walls	0.7	0.5	0.3	0.7	0.5	0.3	0.7	0.5	0.3	0
Working plane	0.2	0.2	0.2	0.2	0.2	0.2	0.2	0.2	0.2	0
<b>ROOM INDEX</b>	<b>UTILIZATION FACTORS(PERCENT) <math>k(RI) \times RCR = 5</math></b>									
<b>k = 0.60</b>	51	39	32	51	39	31	49	38	31	24
<b>0.80</b>	61	48	40	60	47	40	58	47	39	32
<b>1.00</b>	69	56	48	67	55	47	65	57	47	39
<b>1.25</b>	76	63	55	74	63	55	71	61	54	45
<b>1.50</b>	81	69	61	79	68	60	75	66	59	50
<b>2.00</b>	88	77	69	86	76	68	82	73	67	57
<b>2.50</b>	92	83	75	90	81	74	85	78	72	62
<b>3.00</b>	96	87	80	93	85	79	89	82	76	66
<b>4.00</b>	101	93	87	98	91	85	93	87	82	71
<b>5.00</b>	104	97	91	101	95	90	95	90	86	75
<b>ROOM INDEX</b>	<b>UF(total)</b>									<b>Direct</b>
<b>According to DIN EN 13032-2 2004</b>			<b>Suspended</b>				<b>SHRNM = 1.25</b>			

**C Range: 0 - 360DEG**  
**C Interval: 30.0DEG**  
**Test Speed: HIGH**  
**Temperature:25.3DEG**  
**Operators:DAMIN**  
**Test Date:2023-11-03**

**$\gamma$  Range: 0 - 180DEG**  
 **$\gamma$  Interval: 1.0DEG**  
**Test System:EVERFINE GO-2000A\_V1 SYSTEM V2.00.443**  
**Humidity:65.0%**  
**Test Distance:8.000m [K=0.7125]**  
**Remarks:**

**ISOCANDELA DIAGRAM**

Test:U:12.000V I:0.7510A P:9.0000W PF:1.0000 Freq:0Hz		
Lamp Flux:920.285x1 lm		
Name: COB LED STRIP 9W 3000K IP20	Type: LED	
MFR.:		



**C Range: 0 - 360DEG**  
**C Interval: 30.0DEG**  
**Test Speed: HIGH**  
**Temperature: 25.3DEG**  
**Operators: DAMIN**  
**Test Date: 2023-11-03**

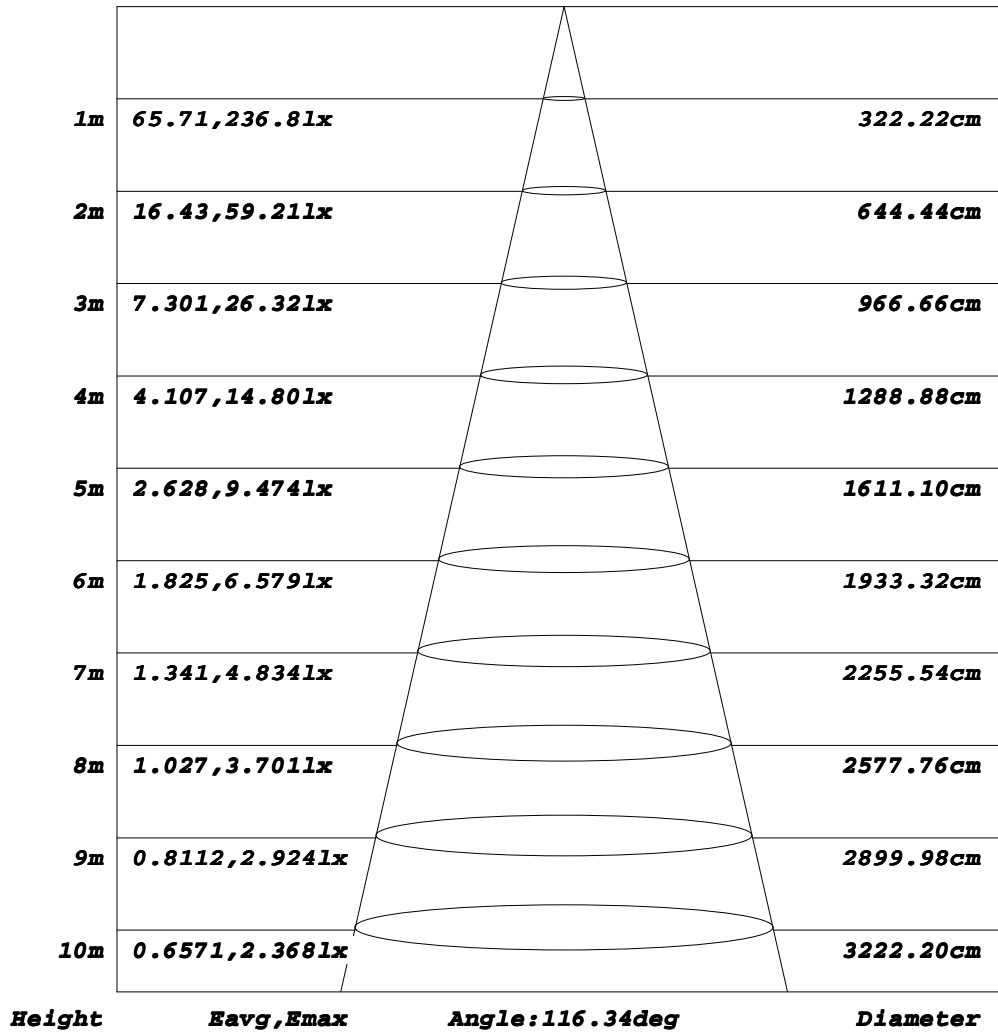
**γ Range: 0 - 180DEG**  
**γ Interval: 1.0DEG**  
**Test System: EVERFINE GO-2000A\_V1 SYSTEM V2.00.443**  
**Humidity: 65.0%**  
**Test Distance: 8.000m [K=0.7125]**  
**Remarks:**



**AAI Figure**

Test:U:12.000V I:0.7510A P:9.0000W PF:1.0000 Freq:0Hz		
Lamp Flux:920.285x1 lm		
Name: COB LED STRIP 9W 3000K IP20	Type: LED	
MFR.:		

**Flux out:571.8 lm**



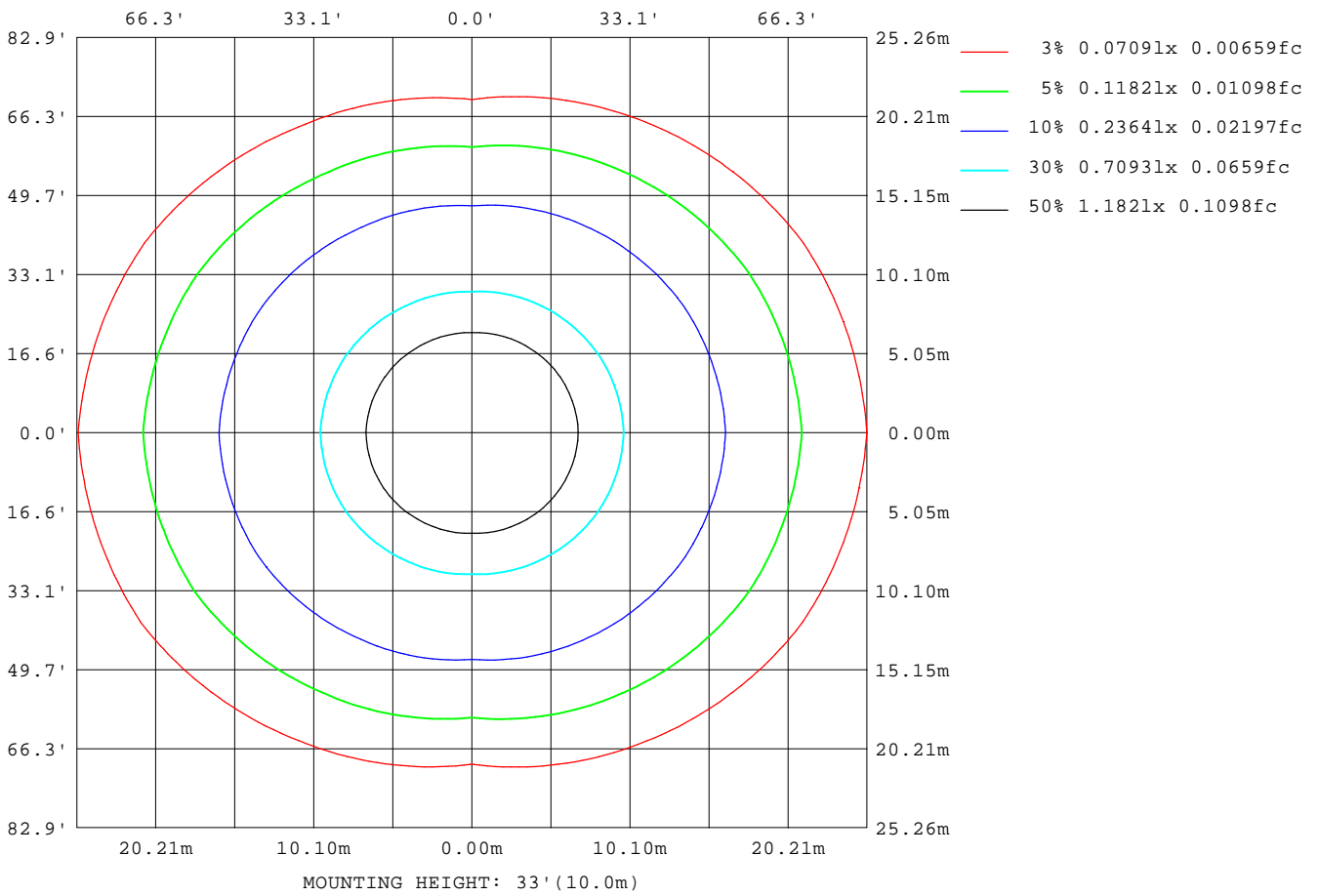
Note: The Curves indicate the illuminated area and the average illumination when the luminaire is at different distance.

**C Range: 0 - 360DEG**  
**C Interval: 30.0DEG**  
**Test Speed: HIGH**  
**Temperature: 25.3DEG**  
**Operators: DAMIN**  
**Test Date: 2023-11-03**

**γ Range: 0 - 180DEG**  
**γ Interval: 1.0DEG**  
**Test System: EVERFINE GO-2000A\_V1 SYSTEM V2.00.443**  
**Humidity: 65.0%**  
**Test Distance: 8.000m [K=0.7125]**  
**Remarks:**

**ISOLUX DIAGRAM**

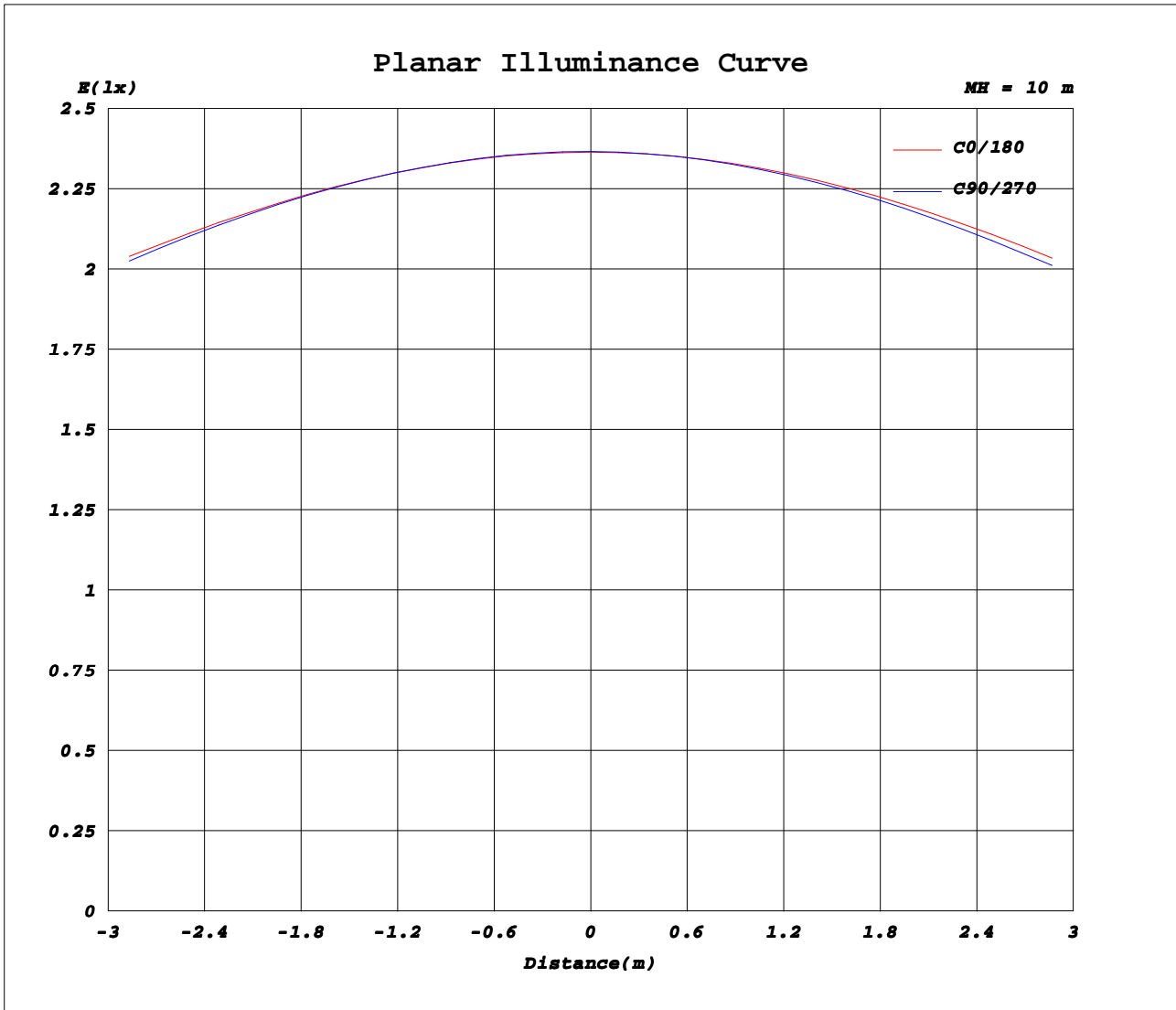
Test:U:12.000V I:0.7510A P:9.0000W PF:1.0000 Freq:0Hz		
Lamp Flux:920.285x1 lm		
Name: COB LED STRIP 9W 3000K IP20	Type: LED	
MFR.:		



**C Range: 0 - 360DEG**  
**C Interval: 30.0DEG**  
**Test Speed: HIGH**  
**Temperature: 25.3DEG**  
**Operators: DAMIN**  
**Test Date: 2023-11-03**

**γ Range: 0 - 180DEG**  
**γ Interval: 1.0DEG**  
**Test System: EVERFINE GO-2000A\_V1 SYSTEM V2.00.443**  
**Humidity: 65.0%**  
**Test Distance: 8.000m [K=0.7125]**  
**Remarks:**

**Planar Illuminance Curve**



**C Range: 0 - 360DEG**  
**C Interval: 30.0DEG**  
**Test Speed: HIGH**  
**Temperature: 25.3DEG**  
**Operators: DAMIN**  
**Test Date: 2023-11-03**

**γ Range: 0 - 180DEG**  
**γ Interval: 1.0DEG**  
**Test System: EVERFINE GO-2000A\_V1 SYSTEM V2.00.443**  
**Humidity: 65.0%**  
**Test Distance: 8.000m [K=0.7125]**  
**Remarks:**

**LUMINOUS DISTRIBUTION INTENSITY DATA**

Test:U:12.000V I:0.7510A P:9.0000W PF:1.0000 Freq:0Hz		
Lamp Flux:920.285x1 lm		
Name: COB LED STRIP 9W 3000K IP20	Type: LED	
MFR.:		

Table--1

UNIT: cd

C (DEG) \ γ (DEG)	0	30	60	90	120	150	180	210	240	270	300	330							
0	236	236	237	237	237	237	236	236	237	237	237	237							
5	236	236	236	236	236	236	236	235	235	235	236	236							
10	234	234	234	233	234	234	233	233	232	232	233	234							
15	230	230	230	229	229	230	230	229	228	228	229	230							
20	226	226	224	223	224	225	225	223	222	221	223	225							
25	221	220	217	215	216	219	220	217	214	213	216	219							
30	215	212	209	205	208	212	214	209	205	203	207	212							
35	208	204	199	194	197	203	207	201	194	191	197	203							
40	199	195	187	180	186	194	198	191	183	178	186	194							
45	190	184	174	165	173	183	189	181	170	164	173	183							
50	181	173	160	149	159	172	180	170	156	148	159	172							
55	170	161	145	131	144	160	169	158	141	130	145	160							
60	160	148	129	111	128	148	159	145	125	111	129	148							
65	149	136	112	90.3	111	136	148	133	109	91.4	113	137							
70	138	124	95.5	68.5	94.6	125	137	121	92.4	70.7	97.3	125							
75	127	112	78.8	46.6	78.4	113	126	110	76.5	49.9	81.3	113							
80	114	99.6	62.5	25.8	62.6	101	115	98.0	61.2	29.9	65.6	101							
85	99.8	85.1	47.0	9.31	47.6	87.8	102	85.1	46.8	12.9	47.2	83.2							
90	82.7	67.4	33.3	0.85	34.7	72.0	87.0	70.1	34.1	2.57	28.1	60.1							
95	60.8	43.1	19.3	0.62	23.1	52.7	69.5	52.1	22.6	1.24	23.3	47.5							
100	31.9	10.7	0.56	0.57	8.29	28.2	48.1	29.7	9.63	1.19	6.40	17.5							
105	4.02	1.58	0.43	0.55	0.92	10.1	22.0	10.7	1.75	1.15	1.41	2.46							
110	0.98	0.83	0.66	0.55	0.43	2.77	6.05	3.31	1.14	1.13	1.51	1.56							
115	0.84	0.76	0.65	0.55	0.55	1.37	2.51	1.78	1.13	1.12	1.45	1.44							
120	0.80	0.73	0.64	0.56	0.61	0.95	1.42	1.34	1.18	1.12	1.38	1.35							
125	0.76	0.69	0.62	0.58	0.61	0.90	1.31	1.26	1.15	1.12	1.32	1.25							
130	0.75	0.69	0.64	0.60	0.63	0.88	1.24	1.21	1.13	1.13	1.28	1.20							
135	0.77	0.72	0.67	0.63	0.67	0.89	1.21	1.20	1.14	1.13	1.28	1.20							
140	0.80	0.75	0.70	0.68	0.72	0.92	1.20	1.20	1.15	1.14	1.26	1.19							
145	0.83	0.79	0.74	0.72	0.76	0.96	1.21	1.21	1.16	1.14	1.25	1.19							
150	0.87	0.82	0.78	0.76	0.82	0.99	1.21	1.21	1.16	1.14	1.24	1.18							
155	0.90	0.86	0.83	0.81	0.88	1.04	1.21	1.21	1.17	1.14	1.23	1.17							
160	0.93	0.90	0.87	0.86	0.93	1.06	1.19	1.19	1.15	1.14	1.22	1.17							
165	0.98	0.94	0.91	0.91	0.98	1.09	1.18	1.18	1.14	1.12	1.19	1.17							
170	1.02	0.99	0.97	0.96	1.03	1.11	1.16	1.15	1.12	1.10	1.18	1.17							
175	1.06	1.03	1.00	1.00	1.07	1.11	1.12	1.10	1.08	1.06	1.13	1.15							
180	1.08	1.05	1.03	1.03	1.10	1.12	1.09	1.06	1.03	1.03	1.09	1.13							

**C Range: 0 - 360DEG**  
**C Interval: 30.0DEG**  
**Test Speed: HIGH**  
**Temperature: 25.3DEG**  
**Operators: DAMIN**  
**Test Date: 2023-11-03**

**γ Range: 0 - 180DEG**  
**γ Interval: 1.0DEG**  
**Test System: EVERFINE GO-2000A\_V1 SYSTEM V2.00.443**  
**Humidity: 65.0%**  
**Test Distance: 8.000m [K=0.7125]**  
**Remarks:**